



GAT MONTHLY MEMBERSHIP PROGRESS REPORT

Results as of: 7/31/2023

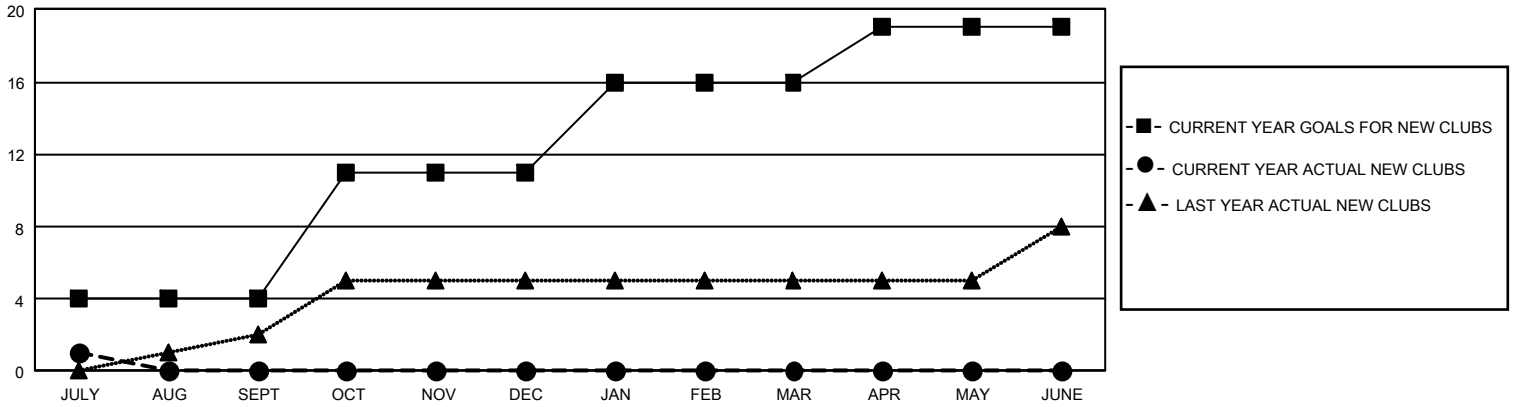
GMT Constitutional Area 5 - E, Group N

REPORT DOES NOT INCLUDE CLUBS IN UNDISTRICTED AREAS.

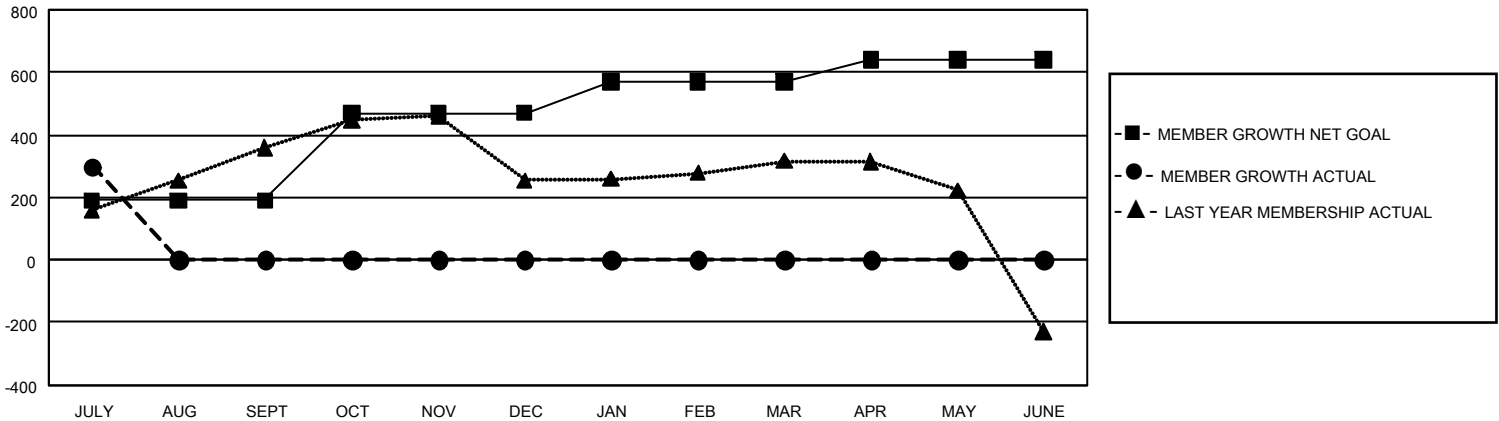
Clubs			
RESULTS FOR 2023-2024			
QUARTER	NEW CLUB GOAL	NEW CLUBS	DROPPED CLUBS
JULY/AUG/SEPT	12	1	0
OCT/NOV/DEC	21	0	0
JAN/FEB/MAR	15	0	0
APR/MAY/JUNE	9	0	0

Members			
RESULTS FOR 2023-2024			
QUARTER	MEMBER GROWTH NET GOAL	MEMBER GROWTH ACTUAL	DROPPED MEMBERS ACTUAL (including transfers)
JULY/AUG/SEPT	190	516	196
OCT/NOV/DEC	280	0	0
JAN/FEB/MAR	100	0	0
APR/MAY/JUNE	70	0	0

GOALS AND ACTUAL NEW CLUBS CUMULATIVE



GOALS AND ACTUAL MEMBERS CUMULATIVE



DROPPED CLUBS: 0	150 CLUBS OF 477 ADDED 1 OR MORE NEW MEMBERS	<u>GENDER DISTRIBUTION</u>	
<u>DROPPED MEMBERS</u>		MALE	8,824 (64.21%)
DECEASED	3	FEMALE	4,867 (35.42%)
CLUB CANCELLED	0	NON BINARY	0 (0.00%)
OTHER	193	PREFER NOT TO ANSWER	51 (0.37%)
TOTAL	196	TOTAL FAMILY UNIT MEMBERS	1,938
	CLICK HERE FOR CUMULATIVE MEMBERSHIP DATA	FAMILY MEMBERS PAYING HALF DUES	1,109